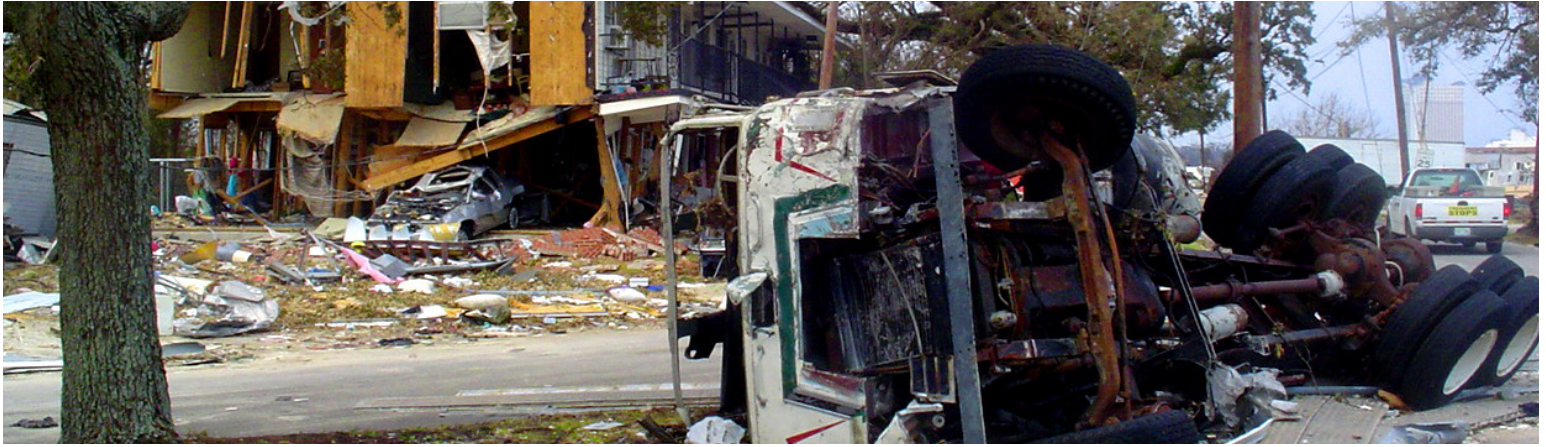


STRUCTURAL ENGINEERING EMERGENCY RESPONSE



A Program of Professional Volunteers Providing Post-Disaster Assistance

Why SEER? All too often affected communities are left without assistance determining whether buildings in the post-disaster environment are adequate for re-occupancy. When evaluations are not performed quickly by properly qualified individuals, residents may reoccupy unsafe buildings. The key is to ensure that qualified damage assessment professionals are available to perform post-disaster damage assessments.

NCSEA's SEER program has developed a national database of properly trained and certified damage assessment professionals capable of assisting with post-disaster damage assessments.

www.ncsea-seer.com

SEER's Difference. NCSEA's SEER Program is a comprehensive nationwide program built on four principles:

- **TRAINING**—Facilitate training for member organization volunteers
- **ROSTER MANAGEMENT**—Compile a comprehensive national roster of trained 2nd responders
- **ASSISTANCE COORDINATION**—Provide lists of properly trained individuals to AHJs and other stakeholders
- **ADVOCACY**—Advocate through education for properly trained and certified damage assessment professionals

ACCESS Resources Today. The SEER 2nd Responder Roster allows volunteers to access and regularly update their record. After contact and certification information is vetted, location-based volunteer rosters will be available to local, state and federal agencies requesting post-disaster assessment assistance. For more information please visit: www.ncsea.com/committees/seercommittee



645 N. Michigan Ave.
Suite 540
Chicago IL 60611
t: 312.649.4600 | f: 312.649.584